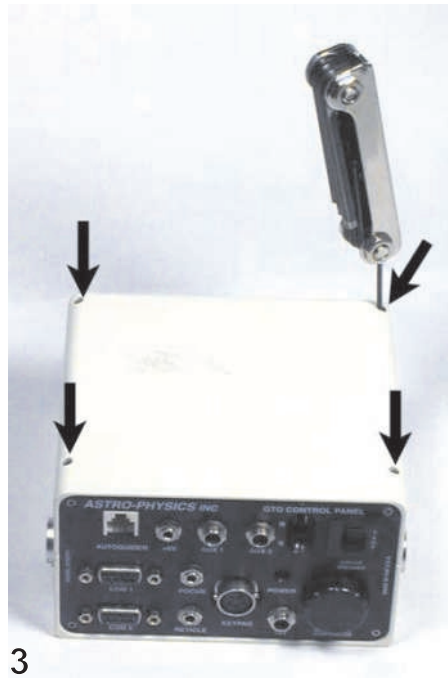


Removal of The GTOCP1 Control Box

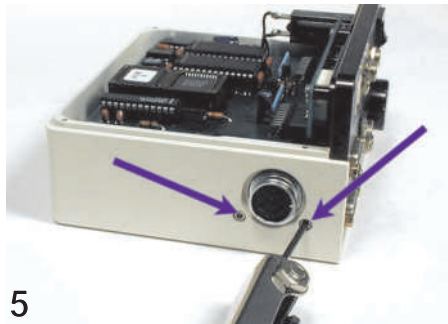


The GTOCP1 control box shipped with the early Astro-Physics GTO mounts that do not have the quick release feature that the current models have. To remove your control box for upgrade, you will need to follow the instructions in this document.

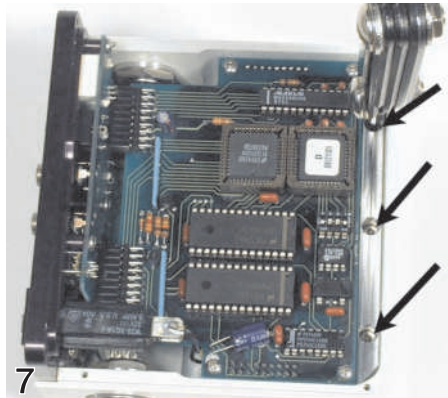
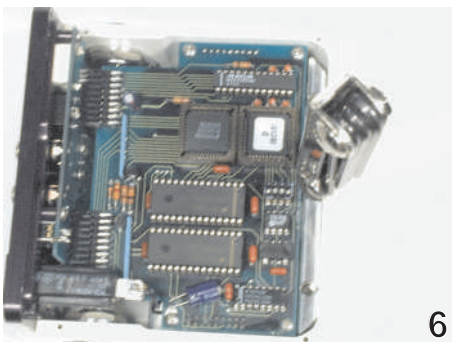
1. Using a 5/64" hex key remove the 4 screws on the front panel shown in diagrams 1 and 2.



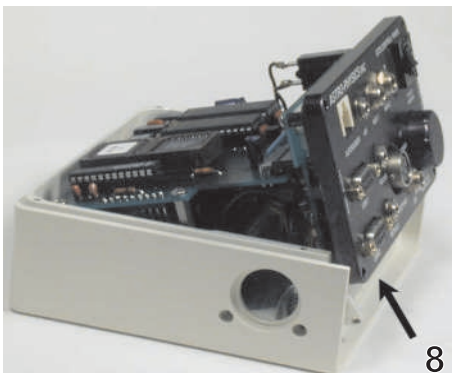
2. Using the same 5/64" hex key remove the 4 screws on the top as shown in diagram 3. Remove the top cover and set it aside.



3. Remove the 2 screws on each side of the control box near the cable connector. This is shown in diagrams 4 and 5.



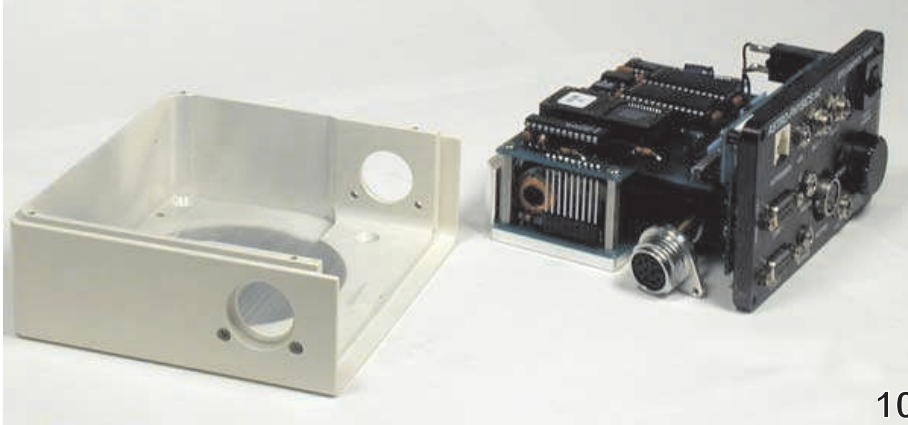
4. Use a 7/64" Hex Key to loosen and remove the 3 hex key screws from the back of the control box. This is shown in diagrams 6 and 7.



5. Push in the 2 cable connectors on the sides as shown in diagram 8.

6. Gently lift-up the control panel by the black face plate then slide it out of the housing as shown in diagram 9.

Removal of The GTOCP1 Control Box

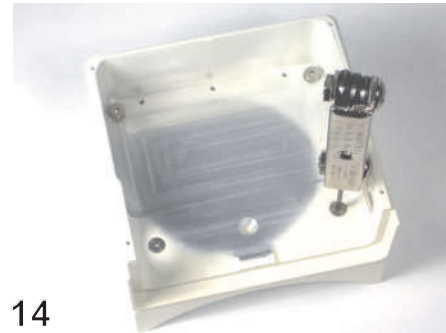
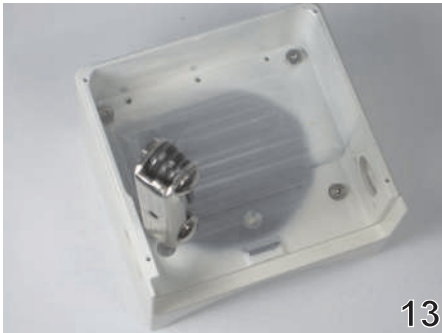


7. Diagram 10 shows the electronics separated from its housing.



900GTO Mounts

8. The control box housing is held to the 900GTO mount with 3 socket head flat screws. Use a 3/32" hex key to remove these screws and remove the housing from the plate holding it to the mount. This is shown in diagrams 11 and 12.



1200GTO Mounts

9. The control box housing is held to the 1200GTO mount with 4 socket head flat screws. Use a 3/32" hex key to remove these screws and remove the housing from the plate holding it to the mount. This is shown in diagrams 13, 14 and 15.



10. After removing the control box please remount the electronics into the box and refasten the screws. This will allow for easy storage or shipment back to Astro-Physics.

You may want to screw the flat head screws back into the holes they came from in the plate attached to the mount for safe keeping.