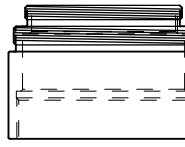


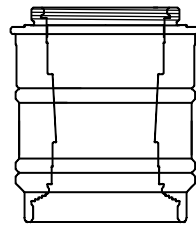
# Barlow Holder System Chart

Threaded 2.7" Adapter with Internal 42mm Thread (BH27-INT42)

Utilize either the  
AP BARADV or  
Baader FFC

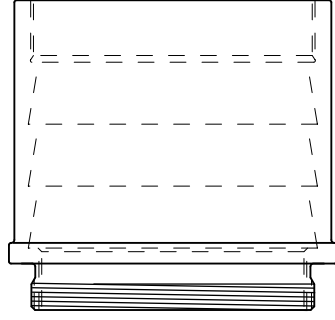


BARADV  
Lens Cell

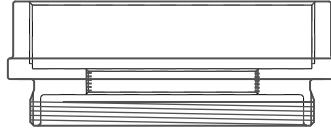


BPFFC

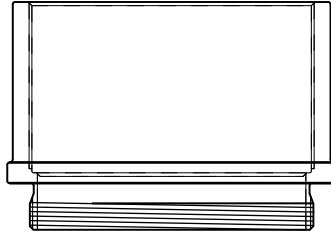
←  
To Telescope  
Focuser



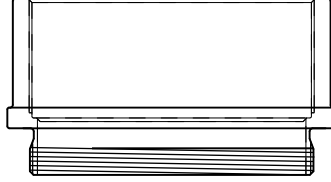
EXT27-64.8



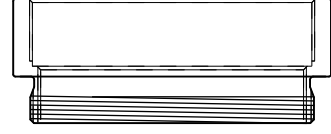
BH27-INT42



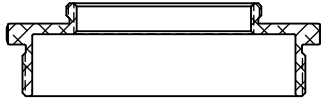
EXT27-31.8 or  
EXT27-44.5



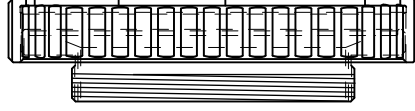
EXT27-22.9 or  
EXT27-27.0



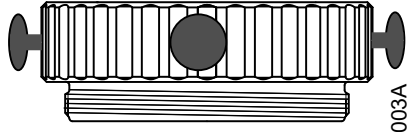
EXT27-15.2 or  
EXT27-19.1



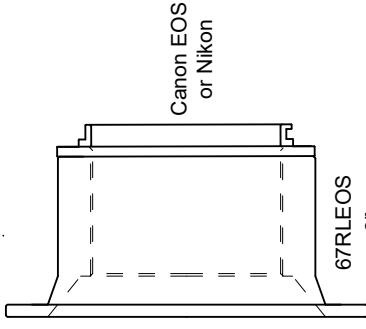
ADA27-42  
ADA27-48  
ADA27-54  
ADA27-2156



ADA2767

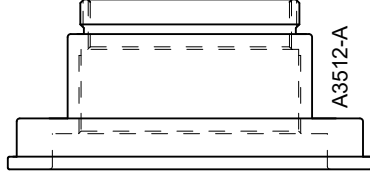


ADA2003A  
or ADA20132



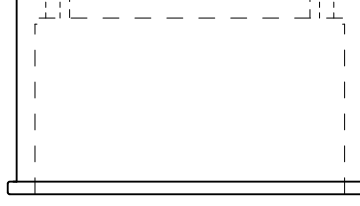
Canon EOS  
or Nikon

67RLEOS  
or  
67RLNIK



QSI WSG

A3512-A



SBIG STL  
with  
5 or 8 Filter  
Wheel

ADA671 or ADA672

Visual Accessories  
and  
Planetary Cameras

## Add extension tubes for magnification variations

Baader FFC\*: 2x = 42mm, 3x = 96.2mm, 4x = 150mm,  
5x = 206.4mm, 6x = 259mm, 7x = 314mm, 8x = 368mm

BARADV\*\*: 1.8x = 70mm, 2x = 90mm, 2.5x = 134mm

\*these are the spacing distances from the middle point of the optic to the focus point

\*\*these are the spacing distances from the rear flange of the optic section to the focus point