

5

4

3

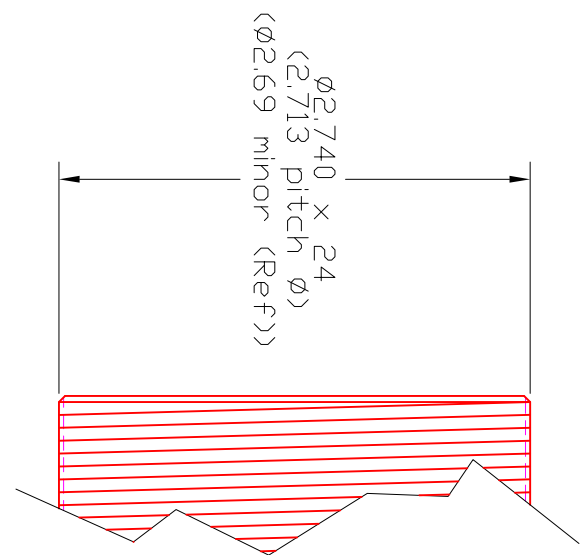
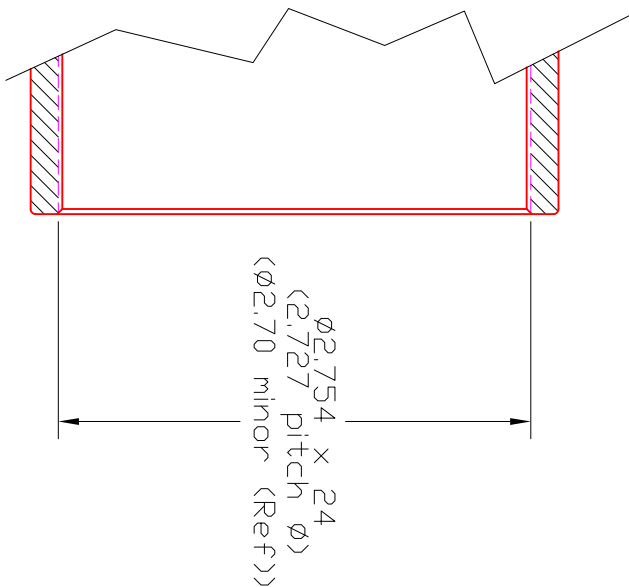
2

1

NOTES:

1. Remove burrs and all sharp edges.
2. Pitch diameters are #1 criteria, as major & minors can vary with insert geometry.
3. Thread clearance is intentionally ran in excess to accommodate older versions of accessories, If a tighter thread is preferred for your application then adjust female thread accordingly

REVISIONS				
ZONE	REV	DESCRIPTION	DATE	APPROVED



Item#	Qty	Part Number	Part Name	Material	Rev
Tolerances, Unless Specified Otherwise					
X = +/- .03					
XX = +/- .01					
XXX = +/- .0025					
XXXX = +/- .001					
Angular = +/- 0.5 DEG					
All Dimensions Inches					
Material ---					
Scale ---					
ASTRO-PHYSICS, INC.					
2.740 x 24 Thread standard					
DWG NO. AP2.74-24					
R. Walters					
7/10/08					
SHEET 1 of 1					

A

B

C

D

5

4

3

2

1

A

B

C

D